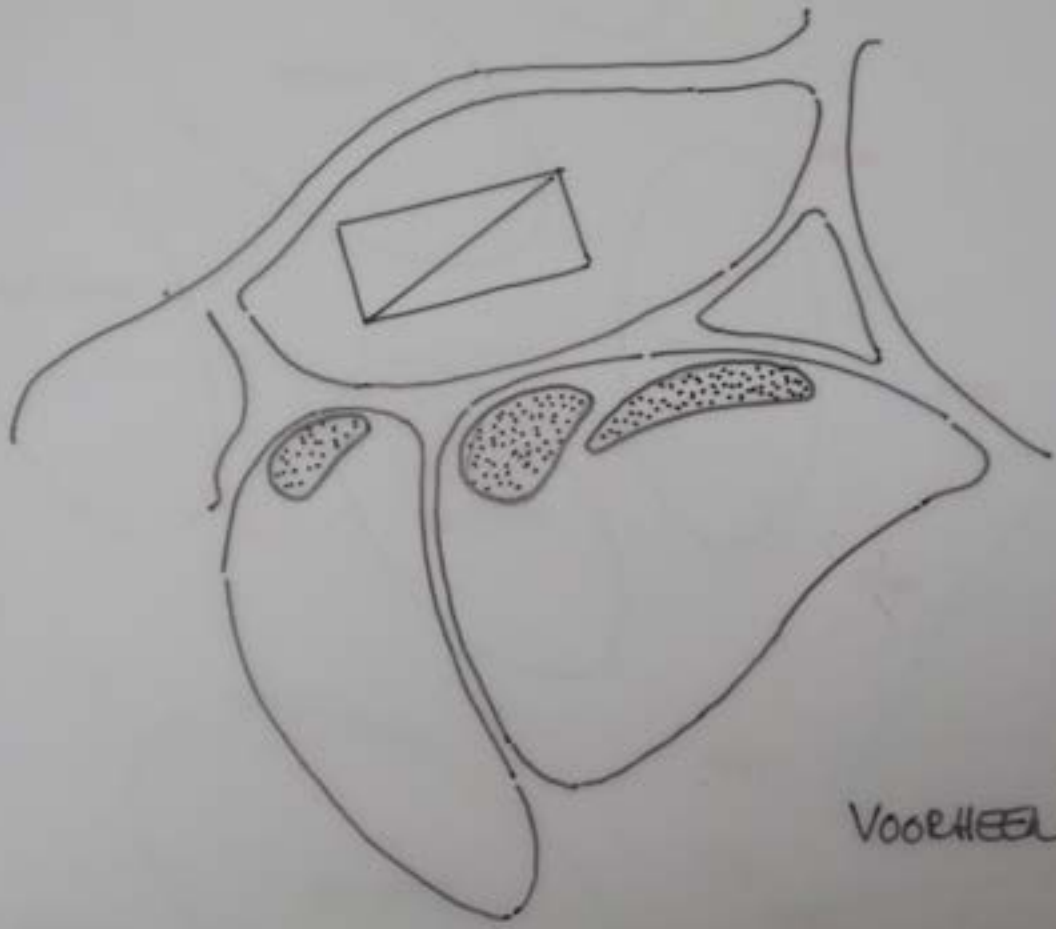


Het Park Rotterdam

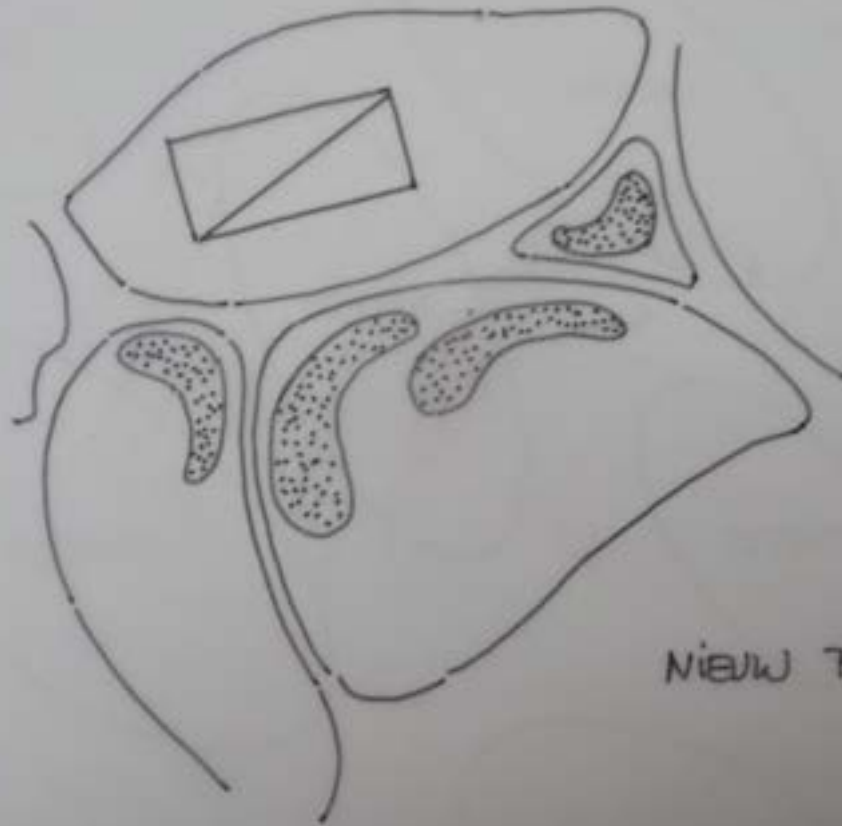
Bloemborders nieuwe stijl

JACQUELINE VAN DER KLOET
tuinontwerp en beplantingsadvies

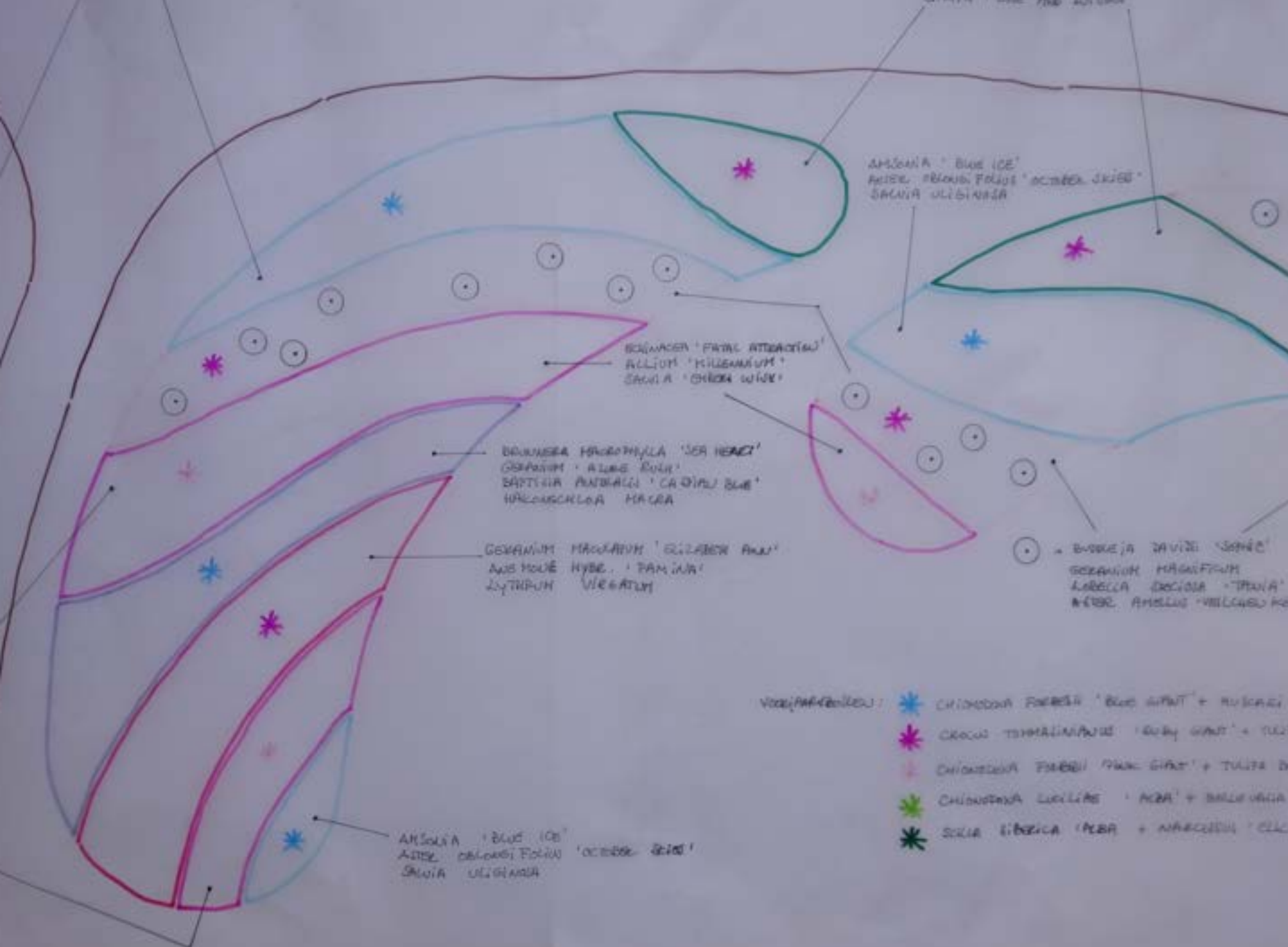




VOORHEEN



NIJEW PLAN 2022



ANSOLIA 'BLUE ICE'
 AITTE. PRINUS FOLIUS 'OCTOBER SKIES'
 SALVIA ULIGINOSA

SCILLA MARITIMA 'FRANCIS ATTERBURY'
 ALLIUM 'MILLENNIUM'
 SALVIA 'CHERRY WINE'

DRUMMETIA HEDERIFOLIA 'SEA HENNY'
 GERANIUM 'ATLANTIS BLUE'
 BAPTISIA AUSTRALIS 'CAPITAL BLUE'
 HIERACIUM MARSCHALLII 'MAGRA'

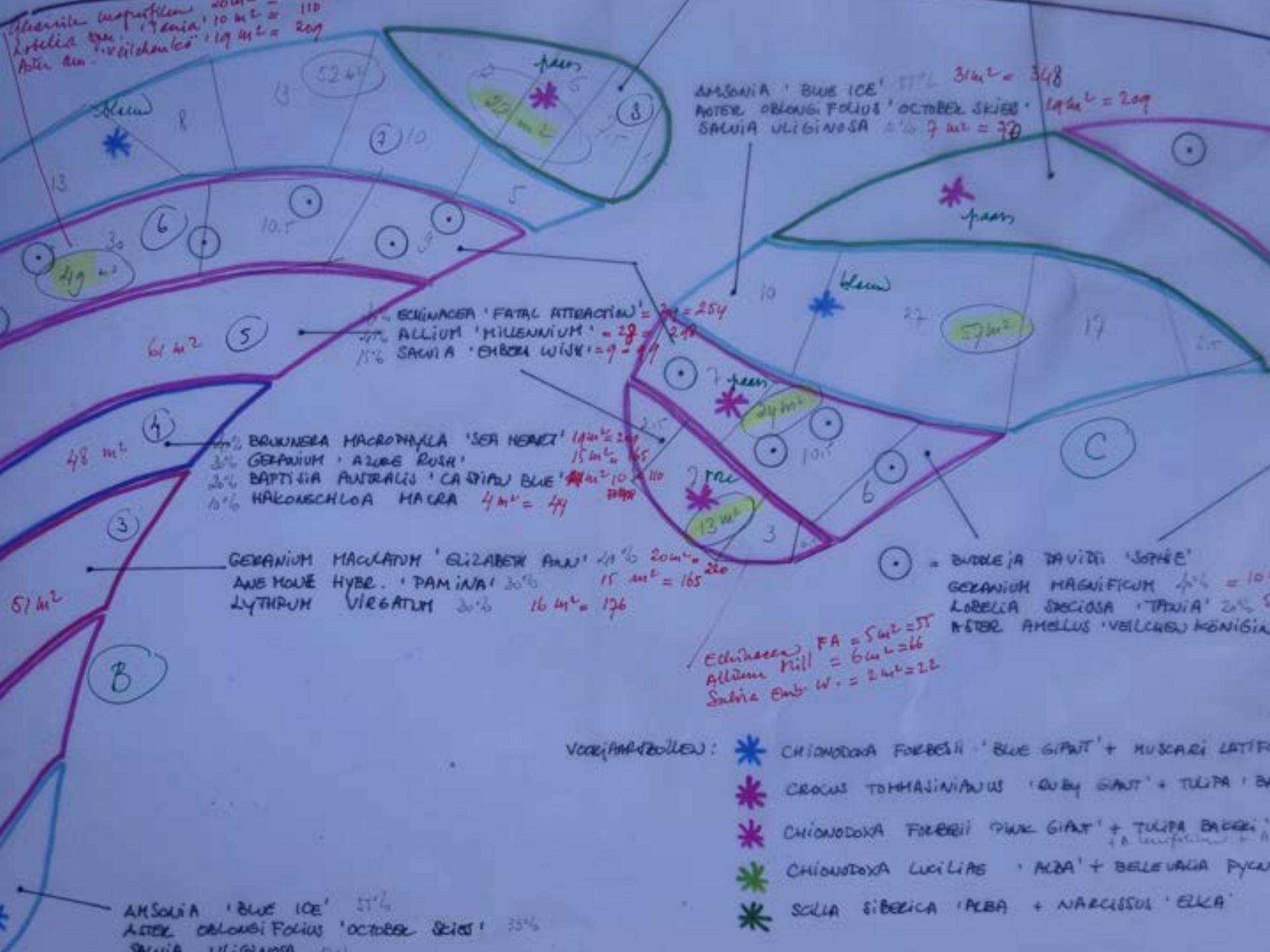
GERANIUM MACULATUM 'ELIZABETH ANGEL'
 AJS MOUSE HYBR. 'PAM JANA'
 LYTHRUM VIOLETUM

ANSOLIA 'BLUE ICE'
 AITTE. PRINUS FOLIUS 'OCTOBER SKIES'
 SALVIA ULIGINOSA

• BUKKJA JAVITI 'SANGI'
 GERANIUM MACULATUM
 LARREA TRICOLOR 'TRINIA'
 AITTE. PRINUS FOLIUS 'VILCASSO RO'

- VÄRKYÄRÄTÖIKÖU:
- * CHIONODOXA FRANSERII 'BLUE SPARK' + RUSKAKKI
 - * CROCUS THOMASII 'RUBY SPARK' + TUUKKI
 - * CHIONODOXA FRANSERII 'PINK SPARK' + TUUKKI B
 - * CHIONODOXA LUCILLAE 'ACEA' + BILLYVAHKA
 - * SOLIA SIBERICA 'ACEA' + NARCISSUS 'ELC'

Platycodon grandiflorus 20%
Lobelia speciosa 10%
 Aster an. 'velchowi' 10%
 Aster an. 'velchowi' 10%
 Aster an. 'velchowi' 10%



ANEMONE 'BLUE ICE' 55% 31m² = 348
 ASTER OBLONGIFOLIUS 'OCTOBER SKIES' 14% 7m² = 209
 SACUNIA ULIGINOSA 2% 7m² = 78

1/2% ECHINACEA 'FATAL ATTRACTION' = 2% = 254
 1/2% ALLIUM 'MILLENNIUM' = 2% = 248
 15% SACUNIA 'EMBER WICK' = 9% = 49

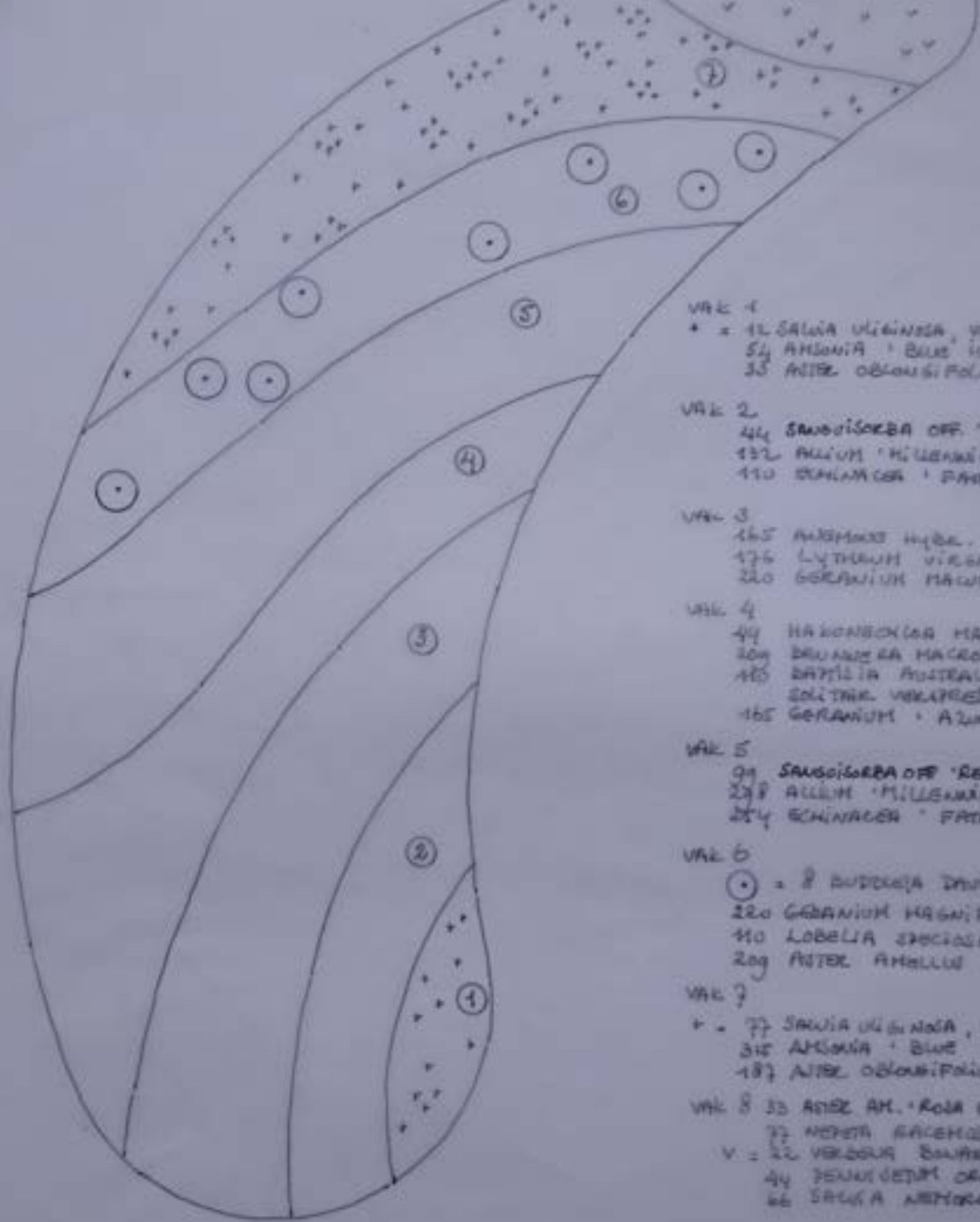
1/2% BRUNNIA MACROPHYLLA 'SEA HENNET' 14m² = 209
 30% GERANIUM 'AZURE RUSH' 15m² = 165
 30% BAPTISIA AUSTRALIS 'CASPIAN BLUE' 10m² = 110
 10% HAKONSCHELOA MACRA 4m² = 44

GERANIUM MACULATUM 'ELIZABETH ANN' 18% 20m² = 220
 ANEMONE HYBR. 'PAMINA' 30% 15m² = 165
 LYTHRUM VIREGATUM 30% 16m² = 176

Echinacea FA = 5m² = 55
 Allium Mill = 6m² = 66
 Subira Emb. W. = 2m² = 22

- Vorderbeetle:
- ★ CHIONODOXA FORBESII 'BLUE GIANT' + MUSCARI LATIFLORUM
 - ★ CROCUS TOMMASIANUS 'RUBY GIANT' + TULIPA 'BY'
 - ★ CHIONODOXA FORBESII 'BLUE GIANT' + TULIPA BAKERI
 - ★ CHIONODOXA LUCILIAS 'ALBA' + BELLEVUEA PYRAMIDATA
 - ★ SCILLA SIBERICA 'ALBA' + NARCISSUS 'ELKA'

ANEMONE 'BLUE ICE' 55%
 ASTER OBLONGIFOLIUS 'OCTOBER SKIES' 35%
 SACUNIA ULIGINOSA



- VAK 1
 * = 42 SALVIA ULGINOSA, VERBENAID IN
 54 ANEMONA 'BLUE ICE' BU
 35 ASTER OBLOUSIFOLIUS

- VAK 2
 44 SAUSOIKABA OFF. 'RED B.' AU SAUTRAE IN
 132 ALLIUM 'MILLENIAUM' BU APPRET:
 110 SCHLACER 'PINK ATTRACTION'

- VAK 3
 165 ANEMONE HYBR. 'PINKIE'
 136 LYTHRUM VIRGATUM
 220 GERANIUM MAJUS 'SILVIA'

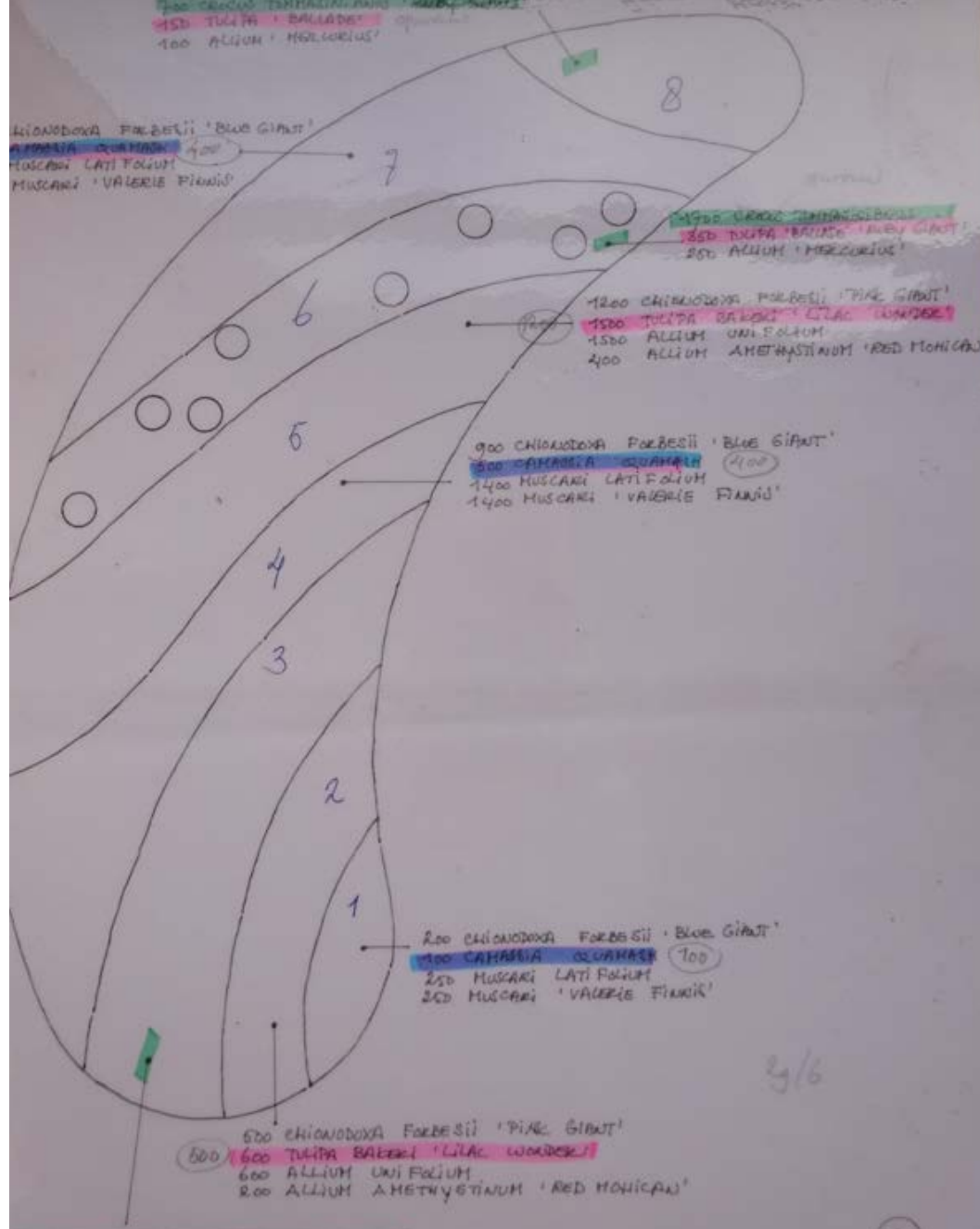
- VAK 4
 44 HANSENCKIA HANSA AU SAUTRAE IN
 204 BRUNNENIA MACROPHYLLA 'SEA HOPPER'
 160 BAPTISIA AUSTRALIS 'LADY IN BLUE' AU
 SOUTHERN VERBENAID IN
 165 GERANIUM 'AZURE ROSE'

- VAK 5
 94 SAUSOIKABA OFF. 'RED B.' AU SAUTRAE IN:
 238 ALLIUM 'MILLENIAUM' BU APPRET:
 214 SCHLACER 'PINK ATTRACTION'

- VAK 6
 (•) = 8 BUDDEJA DWARFI 'SUNNY'
 220 GERANIUM MAJUS
 110 LOBELIA SPECIOSA 'TANIA'
 209 ASTER AMELLUS 'VILLOSO-CENTAU'

- VAK 7
 * = 77 SALVIA ULGINOSA, VERBENAID IN
 318 ANEMONA 'BLUE ICE' BU
 187 ASTER OBLOUSIFOLIUS 'OCHRE-GLAZ'

- VAK 8 33 ASTER AM. 'ROSE BEFOLDS' AU SAUTRAE IN
 72 NIPETA SACCOLA 'GROB'
 V = 22 VERBENA SAUTRAE IN
 44 DENNARDIA OBLONGA 'WALLEY LEE'
 66 SALVIA AMYGDALIA 'CANTONIA'



10 CROCUS TOMHASTINGIUS 'RUBY GIANT'

10 TULIPA 'BALLADE'

10 ALLIUM 'MERCURIUS'

(B)























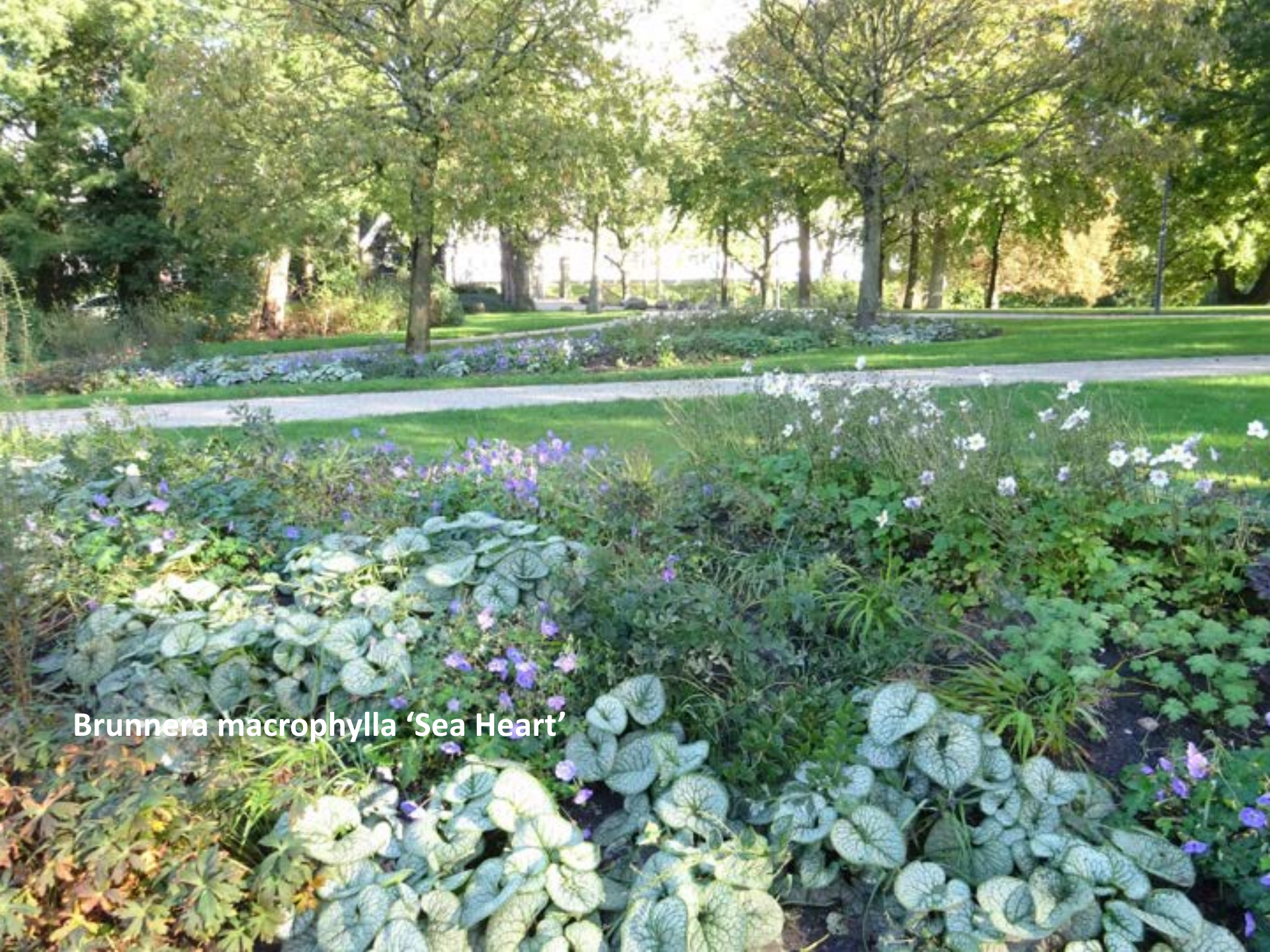
Allium 'Red Mohican'











Brunnera macrophylla 'Sea Heart'



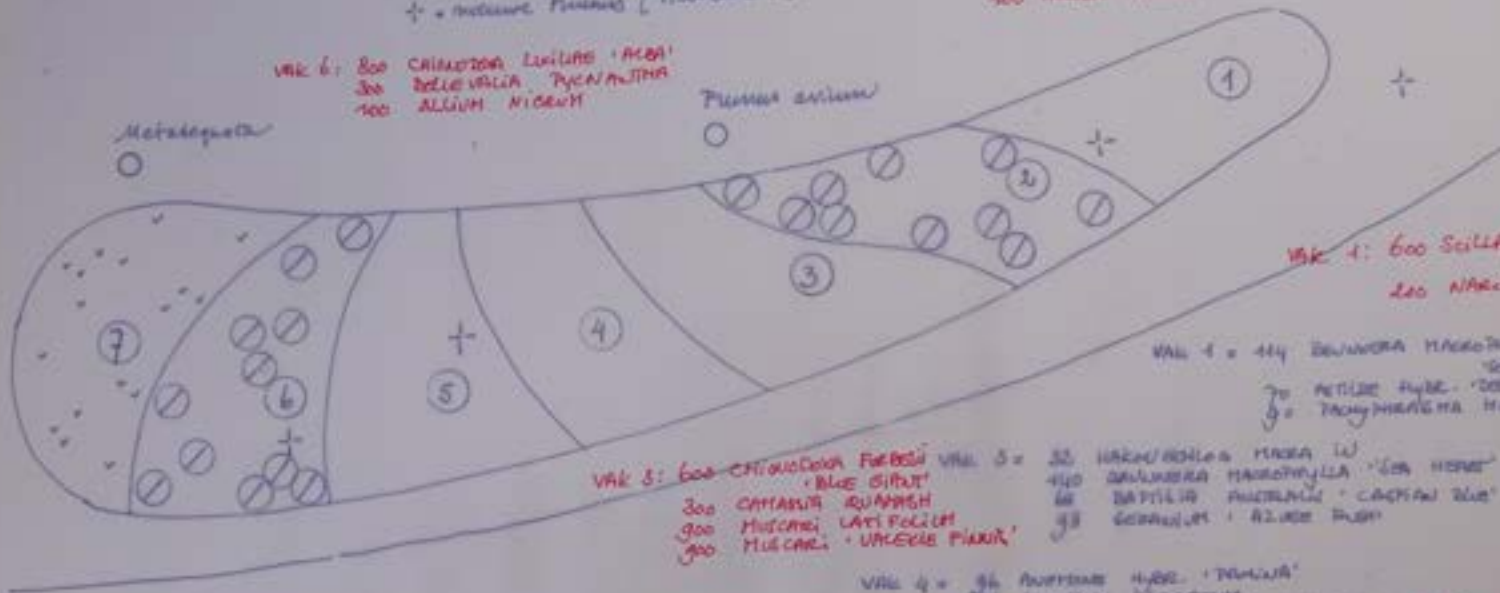
ANVULLING 2023

+ = include *Pinnus* ('Accolade'?)

VAR 6: 800 *CHIONODOXA LUCIDA* 'ALBA'
300 *BELLEVALIA TYPICANTHA*
100 *ALLIUM NIGRUM*

VAR 2 = ⊗ = 10 *HYDRANGEA TRIANGULARIS* 'LIVING TOUCH OF PINK'
50 *CHICOPUSA CANADA* 'PINK SPAN' IN GROUND
140
200 *GERANIUM MACRANTHUM* 'WHITE WISE'
400 *AURICULA HYBR.* 'BUTTERED SUNB'

VAR 2: 800 *CHIONODOXA LUCIDA* 'ALBA'
300 *BELLEVALIA TYPICANTHA*
100 *ALLIUM ANTHURUM*



VAR 1: 600 *Scilla sibirica*
'ALBA'
200 *NARCISS* 'ELEA'

VAR 1 = 400 *BELWEDERA MACROPHYLLA*
'SUN HORSE'
70 *PETIOLIS HYBR.* 'DEPT LAID'
30 *TACHYPHYLLA MACROPHYLLA*

VAR 3: 600 *CHIONODOXA FABREII* 'BLUE GIANT'
300 *CANTHUS RUMPHSH*
900 *MUSCARI LATIFOLIUM*
900 *MUSCARI* 'VIRGIDE PINK'

VAR 3 = 30 *HARALDIA PURA* IN
400 *BELWEDERA MACROPHYLLA* 'SUN HORSE'
60 *BAPTISIA AUSTRALIS* 'CACTUS BLUE' IN
90 *GERANIUM* 'AZURE BUSH'

VAR 4 = 90 *BUTTERED HYBR.* 'TANJA'
30 *LYTHRUM ORIENTUM*
70 *GERANIUM PLANTAGIN* 'ELIZABETH ANN'

VAR 4: 600 *CHIONODOXA FABREII* 'BLUE GIANT'
600 *TULIPA BAKERI* 'LIZAC WOODS'
600 *ALLIUM UNIFOLIUM*
200 *ALLIUM AMETHYSTUM* 'EED
MONICA'

(E)

VAR 6 = ⊗ = 40 *HYDRANGEA TRIANGULARIS* 'LIVING TOUCH OF PINK'
80 *CHICOPUSA CANADA* 'PINK SPAN'
140
200 *GERANIUM MACRANTHUM*
'WHITE WISE'
400 *AURICULA HYBR.* 'BUTTERED SUNB'

VAR 5 = 120 *BELWEDERA MACROPHYLLA* 'SUN HORSE'
80 *PETIOLIS HYBR.* 'DEPT LAID'
100 *TACHYPHYLLA MACROPHYLLA*

VAR 5: 800 *Scilla sibirica* 'ALBA'
300 *NARCISS* 'ELEA'

VAR 7 = 70 *ASTER ANELLUS* 'ROSA DEPULSUS' ALL IEDITH IN
150 *VERBA* 'SACCHINA' 'GROO'
17 *VERBENA BVARICENSIS*
30 *TRICHOLOM AESTIVUM* 'KASLEY RISE' ALL SLOTH IN
90 *TRICHOLOM AESTIVUM* 'CARATOKA'

VAR 7: 100 *CROCUS TOMHA SINIANUS* 'RUBY GIANT'
250 *TULIPA* 'BALLEDE'
150 *ALLIUM* 'MERCURIUS'

GERANIUM ZOTTEDAM 'HOT TALK'
UTICENSIS ANTHURUS 'ELIZABETH ANN' S. S. P.
VAR 1 PLANTING / HOUSTON / VAR 1 (PINK BALLEDE)
SAPPHIRE 4: 100
NOVEMBER 2023
DECEMBER 2023
JACQUELINE VAN DER KLOOT • WRECP

VARI 11: 600 CHIAWIKOFA FORENSII 'PARE GINT'
 800 TULIPA BARRIS 'LILAC WANDER'
 800 ALLIUM VARI PALIUM
 200 ALLIUM AMETHYSTIUM 'RED MONKEY'

VARI 13: 400 CHIAWIKOFA FORENSII 'PARE GINT'
 600 TULIPA BARRIS 'LILAC WANDER'
 500 ALLIUM VARI PALIUM
 150 ALLIUM AMETHYSTIUM 'RED MONKEY'

VARI 8: 800 CROCUS TOMIATSIANAKI 'RUBY GINT'
 200 TULIPA BARRIS 'LILAC WANDER'
 100 ALLIUM MORGANII

VARI 11: 40 SANDALWOOD OFFICINALE 'RED BUTIRUS'
 400 JAGTIKOR IRI
 150 ALLIUM 'MILKSHAKE'
 20 SCAMONIA 'PARE ATANGIOW'

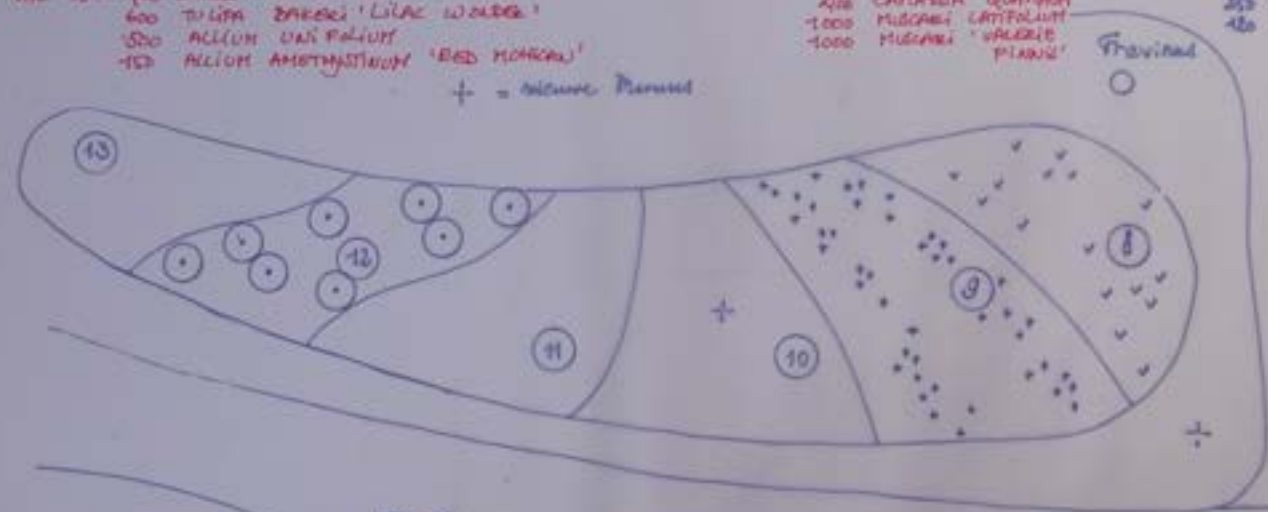
VARI 8: 66 ADIPE AMELLUS 'ROSA DEPILLUM' AU KALITRE. 10
 100 JAGTIKOR BACCHINA 'GRAS'
 4 VERBENA BONARIENSIS
 30 TRACHYPOMA OBLONGUM 'HARLEY 200'
 20 ERVUM HYBRIDUM 'CARAKOJUA'

VARI 9: 700 CHIAWIKOFA FORENSII 'BLUE GINT'
 400 CANTAREA QUINQUEM
 1000 MUSCARI LATIFOLIUM
 1000 MUSCARI 'VAGABOND'
 1000 MUSCARI 'PIANUS'

VARI 3: 40 JALVA VILSINIA, UNJUREN 10
 20 ANEMONA 'BLUE ICE' 10
 100 RHEUM PALMATA POLY 'SCABER-SCABER'

VARI 10: 30 HATIBOCHA HARA ALL
 100 JALVA VILSINIA, UNJUREN 10
 100 SCAMONIA HAKOJUA
 60 BAPTEA AUSTRALIS 'CON HONET'
 100 CANTAREA QUINQUEM
 30 SCAMONIA 'ALICE BUSH'

VARI 15: 700 CHIAWIKOFA FORENSII 'BLUE GINT'
 300 CANTAREA QUINQUEM
 300 MUSCARI LATIFOLIUM
 300 MUSCARI 'VAGABOND FUNK'



VARI 12: 80 SCAMONIA HAKOJUA
 40 LEBEIA SPECIOSA 'QUEEN VICTORIA'
 80 ADIPE AMELLUS 'VAN LONHO KEMELO'

VARI 12: 800 CROCUS TOMIATSIANAKI 'RUBY GINT'
 100 TULIPA 'BALLADE'
 100 ALLIUM 'MERCURIES'

GEMBUS KOTIKOAN 'HOT TRAK'
 DITUSKELING ANJUVILLIUM (BLOKTEREK) 5 BU F
 VARI PLANTU / HESTING / VOCA (PAREKOLE)
 SEMAL 1: 100 NOVEMBER 2023
 DECEMBER 2023
 JACQUELINE VAN DER WILT • WISAP

Het Park Rotterdam

Bloemborders nieuwe stijl

JACQUELINE VAN DER KLOET
tuinontwerp en beplantingsadvies